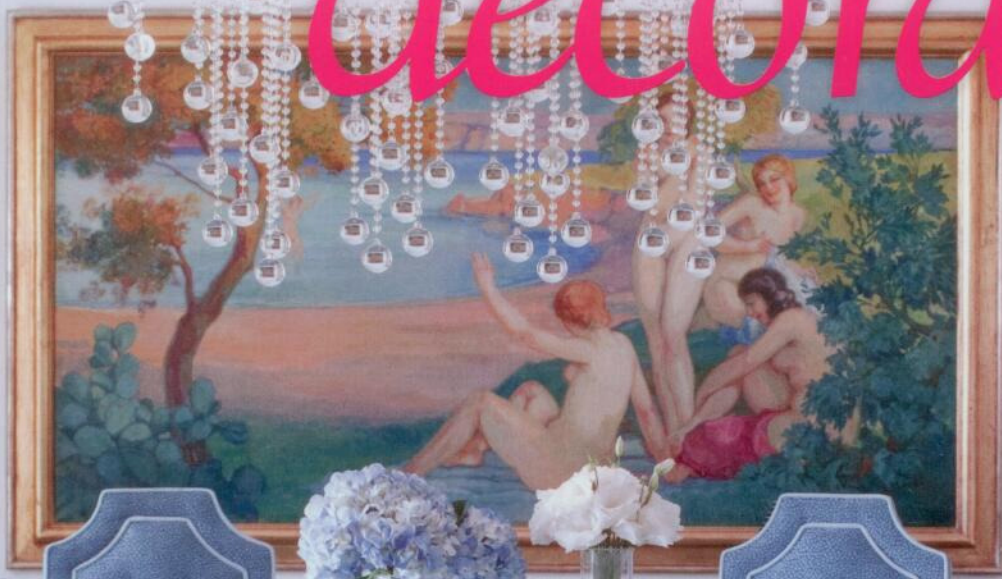


at home

MEET OUR A-LIST WINNER

IN FAIRFIELD COUNTY

decorate!



AT HOME
WITH
ALBERT HADLEY

A WESTON
HOUSE WITH
COLOR + STYLE

35
GREAT
PILLOWS

\$4.
WINTER 2011
WWW.ATHOMEFC.COM





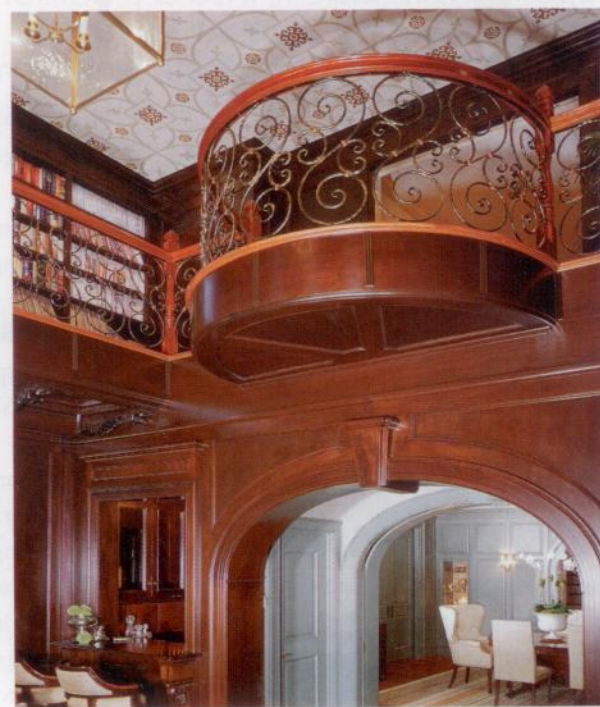
After

Wreaths, holiday cards, and open-house parties mark the start of the season for some. But for many in Fairfield County, especially in Greenwich, the unofficial launch of the holidays is the annual Antiquarius Holiday House Tour and Boutique.

"It's an inauguration of the Christmas season for me," says designer Lori Feldman, who hasn't missed a tour since she moved to Greenwich seven years ago and a neighbor invited her along. "People have made it into a tradition. It's a great chance to look at beautiful homes in Greenwich while also raising money for the historical society and having a fabulous time with your friends."

This year Feldman is opening her own home for the tour, and the shingle-style house dating back to the 1890s is rich in history. Originally built as a cottage and stables for the house across the street, the home in the Byram Shore area was transformed by Feldman in a project that spanned several years. Feldman acted not only as designer but also as general contractor, designing the electrical and plumbing herself. While the project was under way, she and her husband were also starting a family. "I feel like I gave birth to three babies: my two kids and this house," she says with a laugh.

During the renovation, the house was taken down to the studs, but the most appealing architectural features, including the deep window wells, the extensive stonework, and the fireplace, were retained. These defining details give the house tremendous character, while the new layout reveals an open, contemporary design intended for family living and entertaining. Feldman sketched the furniture plan while the architectural plans were being finished, which is the way she prefers to work. "If you spend more time up front, there are fewer mistakes in the long run," she says. "I wanted the space



opposite: In this grand entry, the hand-crafted staircase was built on the premises to fit the tight curve and radius of the space. **above left:** The 1890s shingle-style house underwent a dramatic transformation, but significant details, like the beautiful stonework, were preserved. **above:** The dining room features a custom Georgian-style table, which opens to seat 21 people, and high-back Niermann Weeks chairs shantung silk with brass nailheads. **left:** The pattern on the library ceiling was inspired by mosque designs.